

SNOWFLAKE DATA PLATFORM & APPS

HEALTH CHECK REPORT

A comprehensive view of productivity, cost and performance optimizations.

PREPARED FOR ACME CORPORATION

DATA FROM JAN 27 2024 to FEB 3 2024

TABLE OF CONTENTS

These are just a small subset of the insights you get with Unravel to help you get familiarized with the platform, let's get started!

This is a health check report for the types of cost and performance insights Unravel provides you with. In this report, you will learn about the automation capabilities of Unravel's FinOps and Data Observability platform.

We will review a few examples of issues and insights automatically caught by Unravel and how simple it is to detect, root cause and resolve issues across your data platform, pipelines, and queries.

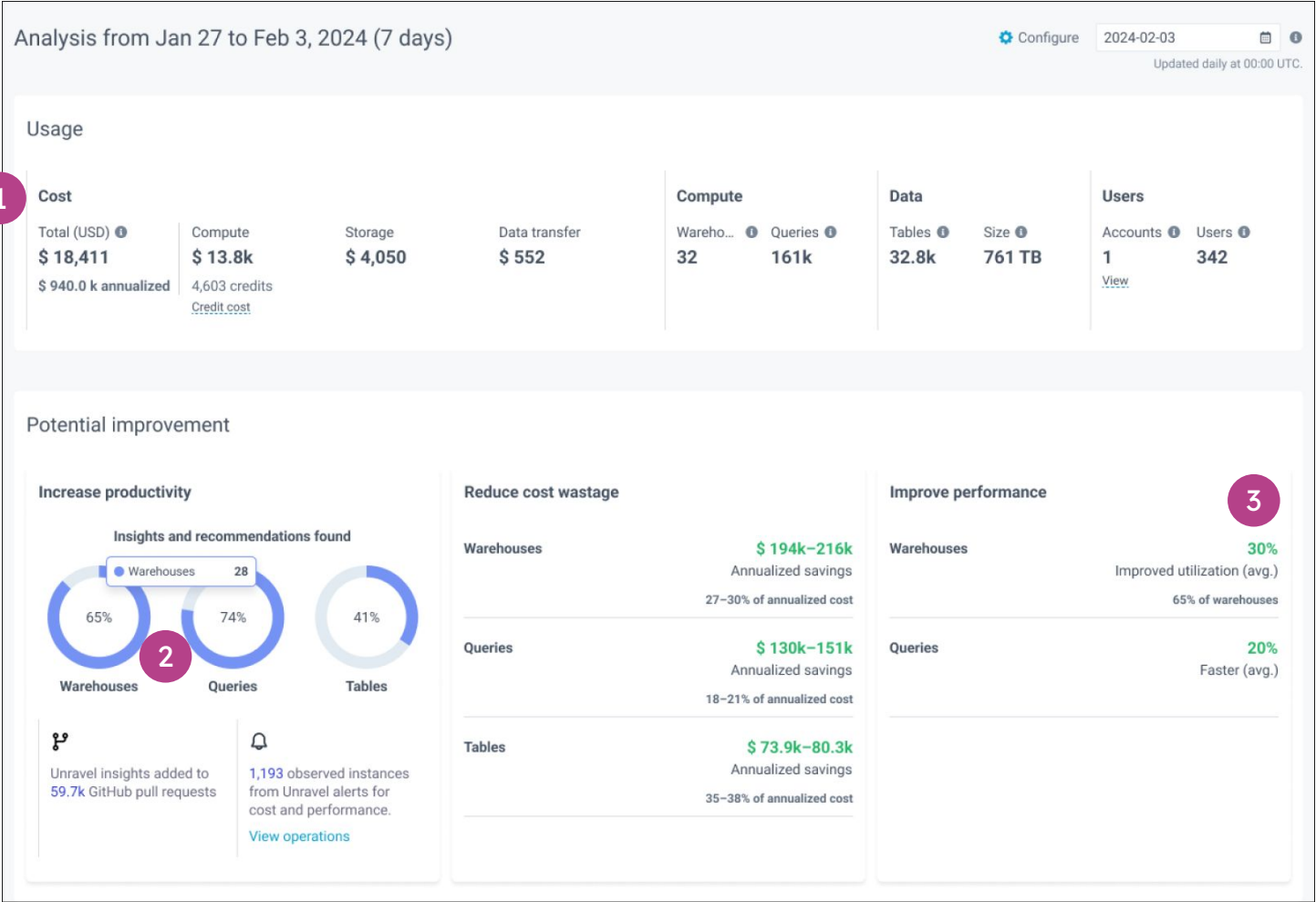
- 03** Overview
- 04** Warehouse Optimization
- 05** Queries Optimization
- 06** Data Optimization
- 07** Proactive Operations

OVERVIEW

UNRAVEL'S HEALTH-CHECK OVERVIEW

The overview page shows key areas of improvement and their impact. The improvements are categorized under productivity, cost, and performance.

These categories have several sub-categories where you can drill down into and understand how to resolve them. This view is generated using Unravel's intelligence engine. Unravel has analyzed all jobs, resource usage, data usage and automatically surfaced areas of improvement.



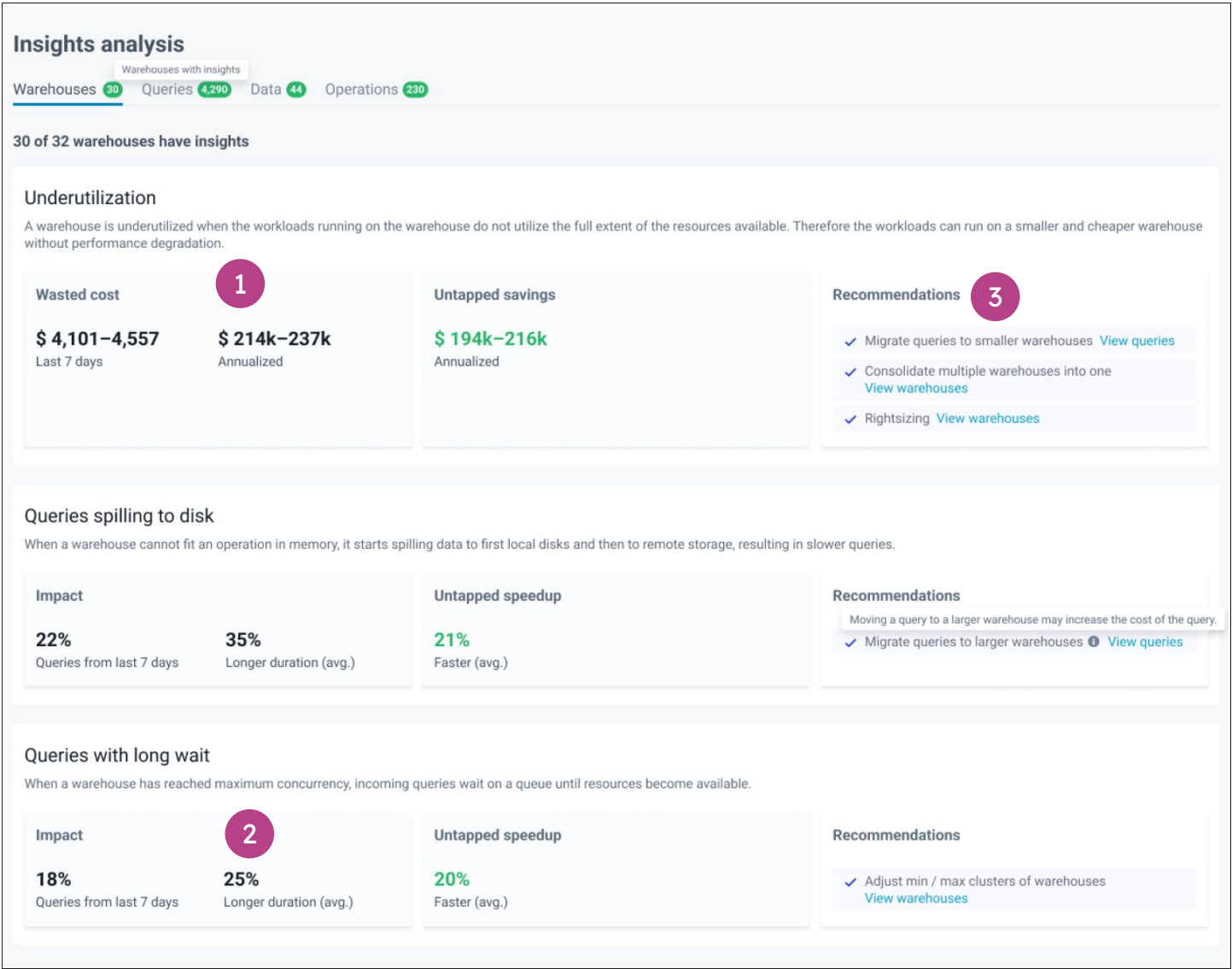
Key findings

1. \$217K annual savings potential would help fast-track Gen AI projects
2. Warehouse and query recommendations represent the largest potential cost savings
3. 30% increase in utilization frees up capacity needed

WAREHOUSE OPTIMIZATION

IMPROVE WAREHOUSE PERFORMANCE AND COST

Unravel’s intelligence engine hunts and surfaces for issues that are slowing down your warehouses or wasting money.

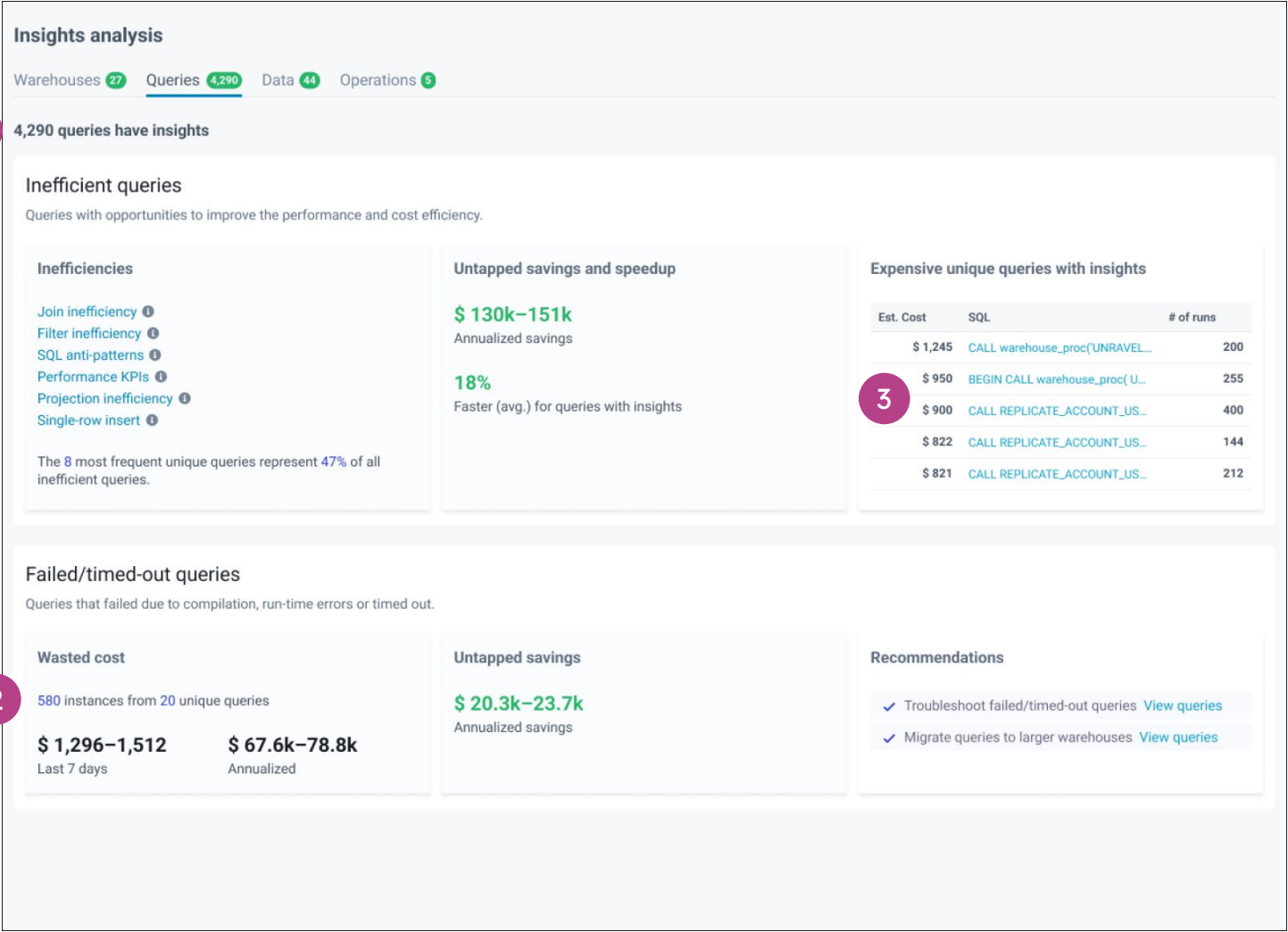


QUERIES OPTIMIZATION

IMPROVE QUERIES PERFORMANCE AND COST

Unravel’s intelligence engine hunts and surfaces for issues that are slowing down your queries or wasting money. Inefficient joins, poor clustering, SQL anti-patterns and more.

Unravel captures all the ways in which you can optimize your queries automatically, helping you maximize performance while keeping costs down.



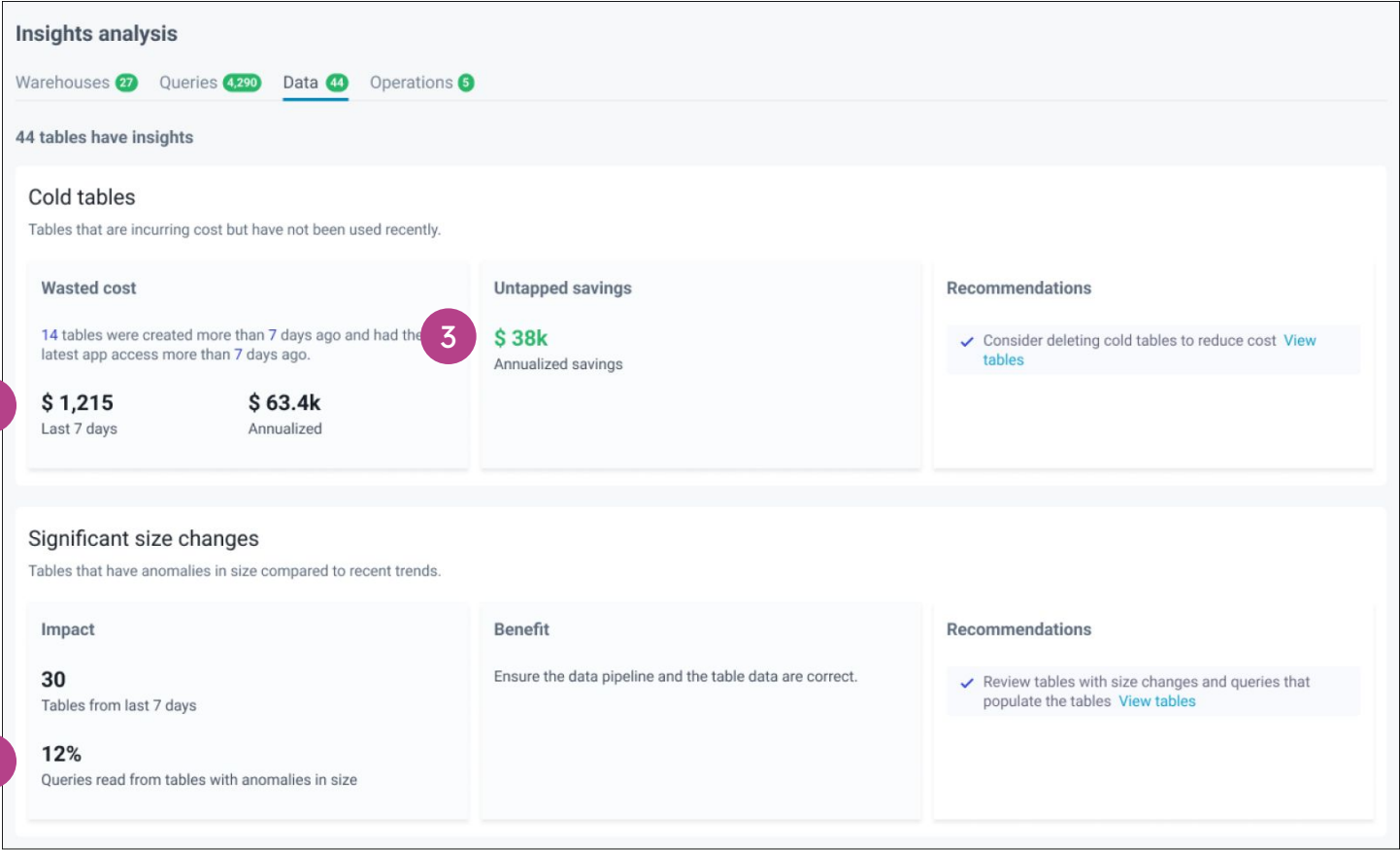
Key findings

1. Recapture \$214K in wasted spend with improved utilization
2. 25% faster queries to help achieve SLAs
3. Warehouse rightsizing and consolidation

DATA OPTIMIZATION

IMPROVE DATA COST AND PERFORMANCE

Unravel’s intelligence engine hunts and surfaces how you could optimize your data storage and tiering automatically. It also pin-points areas of improvement as well as anomalies detected.



Key findings

1. Over 4000 insights were discovered to help maximize performance while keeping costs down
2. These 20 queries failed 580 times – catching these early will save a lot of waste in the future
3. These queries succeeded, but could be optimized

PROACTIVE OPERATIONS

PROACTIVE, AUTOMATED OPERATIONS

Your warehouses are dynamic. They require proactive operations to keep them running optimally. Unravel prompts and sets up alerts on problems it's seeing in your environment.

In addition, Unravel integrated with your CI / CD process and sends insights during code review step to ensure only healthy apps reach production. Thereby eliminating problems before they even arise. All with clear benefits and impact.

Insights analysis

Warehouses 27

Queries 4,290

Data 44

Operations 5

5 action items

Alerting

Enable Unravel-provided alerts or create custom alerts to provide guardrails for rogue applications and more.

[View Alerts](#)

Queries that were canceled with a cost greater than \$25

Disabled

34 observed instances

Running queries that failed in the last 7 days

Disabled

45 observed instances

Queries that ran longer than 80% of warehouse-level timeout

Enabled

55 observed instances

Queries that ran longer than 15 mins

Disabled

30 observed instances

Queries that costed more than \$40

Disabled

28 observed instances

CI/CD GitHub

See Unravel insights in pull requests in your CI/CD environment to prevent bad code from being merged.

Impact

⚠️ CI/CD integration is not set up

161.3k (33%)

Queries from last 7 days

\$ 5,200–5,500

Cost

\$ 271k–288k

Annualized cost

Potential benefits

See the inefficiencies in PRs and mitigate them with Unravel recommendations before merging the PRs

\$ 84.8k–86k

Annualized savings

15%

Faster (avg.)

18%

Queries

Recommendations

✓

Integrate GitHub to discover inefficiencies even before queries run [Contact Unravel](#)

Key findings

1. Enable this alert to quickly spot costly queries being created by analysts
2. CI/CD integration will enable us to track and gamify cost savings for your developers
3. Enable this alert to catch long-running queries

GET YOUR OWN HEALTH CHECK REPORT IN THREE EASY STEPS



Sign Up

Start the process using the
form below



Share

Securely share your telemetry
using Snowflake's Secure Data
Sharing



Review

Receive your Health Check
report in your inbox

REQUEST YOUR FREE REPORT

About Unravel Data

Unravel Data is the first AI driven data observability and FinOps platform designed for the data stack. Unravel enables data driven organizations to identify and resolve performance, cost and reliability problems across platforms and pipelines. Its customers include Citibank, Maersk, Johnson & Johnson, UBS and Intel among others. Unravel Data is backed by Microsoft, GGV Capital, Menlo Ventures, Point72, Third Point Ventures and Harmony Ventures.

Visit www.unraveldata.com for more information.